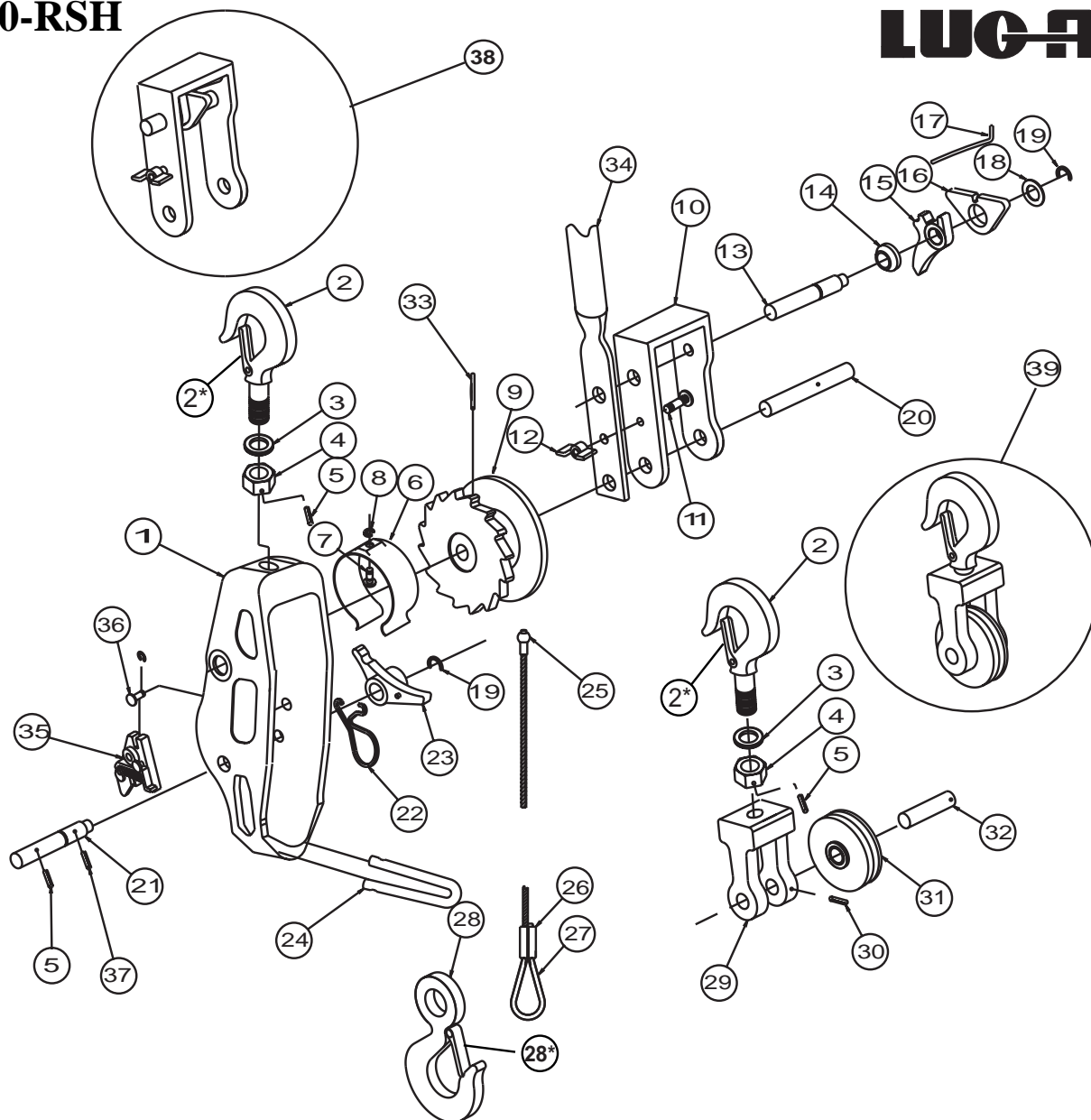


Model 310-RSH

LUG-ALL®



Drawing Ref No.	Description	Qty. Req'd	Lug-All Part No.
1	Main Frame W/ Bushing	1	290
2	Shank Hook W/ Latch	2	138
2*	Shank Hook Latch Repair Kit	2	263
3	Hook Washer	2	118
4	Hook Nut	2	122
5	Hook Nut Locking Pin	3	123
6	Cable Shield Assembly	1	115
7	Cable Shield Pin	1	161
8	Cable Shield Retaining Ring	1	162
9	Drum	1	285
10	U-Frame (W/Handle Bolt)	1	151
11	Handle Bolt	1	133
12	Wing Nut	1	119
13	U-Frame Pawl Shaft	1	128
14	Spring Support Roll	1	289
15	U-Frame Pawl	1	103
16	Reverse Lever	1	288
17	U-Frame Spring	1	130
18	Reverse Lever Washer	1	291
19	Snap Shaft Washer	2	111

Drawing Ref No.	Description	Qty. Req'd	Lug-All Part No.
20	Drum Shaft	1	129
21	Main Frame Pawl Shaft	1	127
22	Main Frame Spring	1	131
23	Main Frame Pawl	1	113
24	Cable Guide	1	104
25	Cable & Drum Anchor	1	147
26	Sleeve Type Cable Clamp	1	149
27	Thimble	1	139
28	Eye Hook With Latch	1	137
28*	Eye Hook Latch Repair Kit	1	263
29	Yoke	1	141
30	Shaft Locking Pin	1	143
31	Pulley W/Bushings	1	152
32	Pulley Shaft	1	112
33	Drum Shaft Locking Pin	1	134
34	Reversible Handle (Red)	1	146
35	Carrier and Actuating Assembly	1	269
36	Carrier Pin & Ring	1	268
37	Actuating Pin On Pawl Shaft	1	279
38	Complete U-Frame Assembly	1	851
39	Complete Pulley Block Assembly	1	803